



## Access Statement for The Ramblers' Rest Tea Room/Restaurant and Luxury B&B



### **Introduction**

The Ramblers' Rest is situated in the picturesque Yorkshire Wolds, in the village of Millington, 3 miles north of the market town of Pocklington and offer a unique Tea Room and Restaurant experience, along with luxury B&B accommodation.

The following statement is a summary of our provision. If you have any specific questions please feel free to call us and we will endeavour to help.

### **Pre-Arrival**

The main train station at York is 40 minutes away by car.

There are local taxi services that have accessible taxis if required, see details below.

Brochures and menus can be provided in large print by prior arrangement –  
Menus are also displayed on our website.

Normal opening hours for the Tea Room/Restaurant are detailed below.

We have a website which is at [www.ramblersrestmillington.com](http://www.ramblersrestmillington.com)

You can contact us via phone on 01759 305220.

## **Arrival & Car Parking Facilities**

The Ramblers' Rest has its own off road parking for up to seven vehicles for visitors to the Tea Room/Restaurant and visitors staying overnight.

The Car Park is accessible off the village street (ungated) and well lit at all times to aid safety and security.



The car park consists of a Gravel surface with no marked parking bays but there is a level stone flagged parking area for one car, connecting directly to a smooth level flagged stone pathway running along the full length of the Car Park. This path, alongside the main building, links the Tea Room/Restaurant entrance (covered porch) to a ground floor bedroom and a stairwell serving the three first floor bedrooms.



The distance from the disabled parking space to the ground floor bedroom door is approximately 3m. The distance from the disabled parking space to the Tea Room/Restaurant entrance door is approximately 15m. We can assist guests with luggage.

## Main Entrance & Reception



Visitors should use the Tea Room/Restaurant covered porch entrance on first arrival (to the right handside of the bay window).

The main entrance and lobby doors into the Bar area are 85cm wide.

## Public Areas – Stairs, Landing, Corridors



The entrance to the first floor accommodation (stairwell) is 85cm wide and the landing at the foot of the stairs is 230cm by 114cm. The flooring on the ground floor is coir matting.

First floor corridors are 94cm wide at narrowest point, have a good colour contrast and are well lit. The covering on stairs and upstairs corridors is short pile carpet



There are seven stairs to a 230cm by 106cm landing followed by a further seven stairs to the first floor bedroom. The stairs are 17cm high, 25cm deep, and 100cm wide.

The stairwell is a means of escape from the three first floor rooms in the event of an emergency, and is fitted with an automatic smoke evacuation system which opens windows when the fire alarm is activated.



## Tea Room / Restaurant / Bar



The porch is weather tight and has a bench along one side. The circulation space between porch and Bar allows easy access and manoeuvrability by wheelchair users.

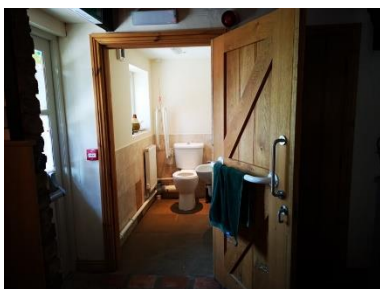
The porch and all of the Tea Room and Restaurant have a smooth level quarry tiled and stone flagged floor.

Breakfast is served in the Tea Room / Restaurant on the ground floor.



Tables have under space height of 29cm and a finished height of 35cm (legs on each corner). The chairs are without arms. Furniture is flexible and can be moved on request.

The less able will be guided and helped to any table if so required.



There is a Male and Female WC and a separate disabled WC, the latter equipped with a pull cord system to alert staff if required. The staff are trained to respond.

Background music is normally played in the Restaurant / Bar areas.

## Bedrooms



Included in our offer of accommodation we have a ground floor room (Room 1), accessed straight from the level hard standing external parking area, for wheelchair users and others who may have difficulty using stairs. The 85cm wide level doorway leads into a spacious unobstructed, well lit room. Room 1 has a spacious wet room with

- non slip flooring
- a 85cm wide outward opening door
- a disabled WC suite with appropriate grab rails and washbasin (toilet 50cm high, washbasin 73cm high)
- a flashing light beacon in case a hard of hearing person is using the wet room when the fire alarm is activated
- a pull cord system to alert staff if required
- a shower with extra hand jet



Room 1 also has

- a wall mounted TV with remote control
- telephone
- sofa bed and easy chair with arms
- twin bedside lamps
- pillow vibrator in case a hard of hearing person is sleeping when the fire alarm is activated
- facility to make a hot drink
- two low surface temperature radiators

- King size 'sleigh' double bed, 62cm high
- At least 90cm routes within the bedroom e.g. to the side of beds, between beds and dressing table, therefore allowing for left or right transfer to beds in any combination
- Furniture is moveable on request
- Fitted short pile carpet on the floor

The remaining three bedrooms (Rooms 2, 3 & 4) are on the first floor and all have an en suite bathroom with

- safety flooring
- A shower with hand jet in a shower cubicle - edge/step 15cm high
- a washbasin and toilet
- good colour contrast of walls, floor and fittings



Rooms 2,3 & 4 also have

- a wall mounted TV with remote control
- telephone
- sofa bed and easy chair with arms
- twin bedside lamps

- facility to make a hot drink
- radiators
- main entrance door widths are 77cm wide
- one King size double bed, 62cm high
- At least 90cm routes within the bedroom e.g. to the side of beds, between beds and dressing table, therefore allowing for left or right transfer to beds in any combination
- Furniture is moveable on request
- Fitted short pile carpet on the floor

### **Laundry**

Not available (Pocklington 3 miles)

### **Shop**

Not available (Pocklington 3 miles)

### **Leisure Facilities**

Not available (Pocklington 3 miles)

### **Outdoor Facilities**

Not available

### **Conference & Meeting Rooms, Banqueting, Clubs, Entertainment**

Not available

## **Grounds and Gardens**



We have a limited number of picnic tables on the gravelled car park for residents to sit at (benches).

There are numerous public footpaths from Millington, some circular, into the surrounding countryside. Millington Pastures and Woods are open to the public also, approximately 1 mile from Millington along the road towards Huggate.

## **Additional Information**

Mobile phone reception is generally poor.

All public areas and WC spaces have lighting which is activated by movement sensors.

All rooms have safety notices displayed regarding fire procedures and staff are trained to assist and help all customers to make a safe exit in the case of evacuation.

We are a no smoking building, and no pets.

Additional blankets are available on request.

Secure storage for access equipment - catered for at present by prior arrangement with Accommodation Manager (Mrs Z Nesom, Town Farm).

## **Contact Information**

Address: Ramblers' Rest, Main Street, Millington, York, YO42 1TX

Telephone: 01759 305220

Website: [www.ramblersrestmillington.com](http://www.ramblersrestmillington.com)



Local public transport numbers:

Bus - EYMS 01482 222222; Train - National Rail 08457 484950

Local accessible taxi numbers: PC Transport 01904 235055; KDN 01904 427293

Local Doctors Surgery number: Pocklington (01759) 302500

Nearest Hospital (with A & E Facilities): York (01904) 631313

Hours of operation:

- The Tea Room is open every day except Tuesday and Wednesday and in the winter welcomes visitors between 10.30am and 4.00pm. Summer opening hours are 10.30am to 5.00pm.
- The Restaurant is open between 7.00 and 9.30pm every night except Tuesday and Sunday, but booking is essential to avoid disappointment.

## **Future Plans**

It is hoped that an additional garden area can be created for guests in the future to the rear of the premises.



**We welcome your feedback to help us continuously improve - if you have any comments please phone 01759 305220 and /or leave a note in the Visitors' Book in the Bar area**

*The Ramblers' Rest Licensed Tea Room & Restaurant - Luxury Accommodation*

Main Street, Millington, York, YO42 1TX

Tel: 01759 305220 ~ [www.ramblersrestmillington.co.uk](http://www.ramblersrestmillington.co.uk)